

FOR SUBLEASE MEMORIAL CITY 820 GESSNER ROAD / HOUSTON, TX 77024

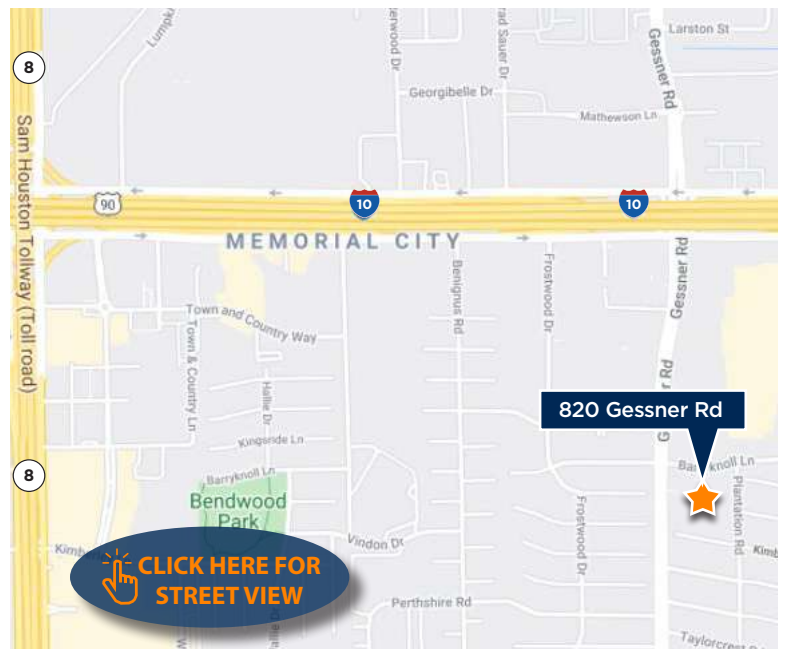
EXECUTIVE SUITE / SUBLEASE OPPORTUNITY

820 GESSNER ROAD / SUITE 1510 / 4,013 RSF



SPACE FEATURES:

Building Address:	820 Gessner Road, Suite 1510
Availability:	Immediate
RSF:	250 - 4,013 SF
Term Expiration:	8/31/25
Year 1 Rate:	Negotiable
Estimated 2021 OPEX:	\$13.50/SF
Parking:	4:1,000 (33% Reserved) at \$45/\$75
Furniture:	Available
Notes:	Premier law firm space available as executive suite arrangement. Executive suite scenario could include 1-3 offices with administrative support. Call for pricing.



ANTHONY FRITSCHÉ

D / 713.275.3801

M / 832.515.7366

afritsche@fritscheanderson.com

FOR SUBLEASE MEMORIAL CITY 820 GESSNER ROAD / HOUSTON, TX 77024



SUITE ENTRY



BOARD ROOM



RECEPTION



PRIVATE OFFICE



CONFERENCE



KITCHEN

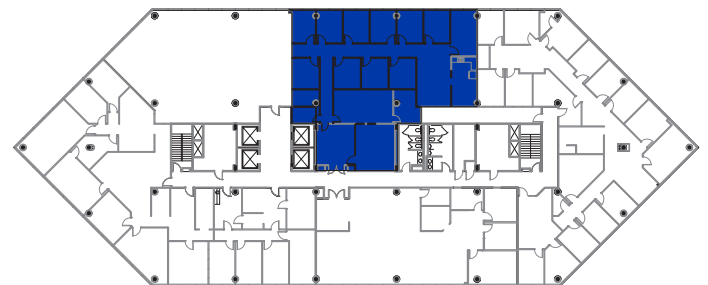
ANTHONY FRITSCHÉ
D / 713.275.3801
M / 832.515.7366
afritsche@fritscheanderson.com

FOR SUBLEASE MEMORIAL CITY 820 GESSNER ROAD / HOUSTON, TX 77024

CURRENT FLOOR PLAN



SUITE 1510
250 - 4,013 RSF



ANTHONY FRITSCHÉ
D / 713.275.3801
M / 832.515.7366
afritsche@fritscheanderson.com